



## CK500V

### HEAVY DUTY MILL-SIZE BALER

The CK500V is most suitable for premises with substantial waste such as large retail shops, factories and waste recyclers.

The sturdy construction of the CK500V enables users to bale materials such as cardboard, plastic film, and hard plastic. It produces an ideal bale size to maximise transport loads.

- Cord or wire tie option
- Large feed opening
- Swing door is a cost effective solution
- Unique pillar support for pressplate stability
- Sturdy construction to bale most materials
- Produces 500kg bale of cardboard
- Bale full indicator



#### BALER DIMENSIONS

Height	3110mm
Width	1920mm
Depth	1100mm
Weight	Approx 2,200kg
Feed Opening (H x W)	610mm x 1185mm

#### BALER PERFORMANCE

Compaction Force	50 tonnes
Cycle Time	55 seconds
Power Supply	3 x 415V, 50Hz
Motor	7.5kW
Noise Level	70dBA

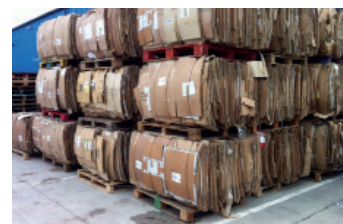
#### BALE DIMENSIONS

Height	1020/1170mm
Width	1270mm
Depth	770mm
Bale Weight Cardboard (approx)	Up to 500kg
Bale Weight Plastic (approx)	Up to 520kg

#### CK500V

4 x Steel Galvanised Wires	3mm dia., 3.9m long
or 4 x rolls of tying cord	12mm
Bale Ejection System	Mechanical

*CK International reserves the right to alter specification without prior notice. Bale weights given are guidelines only, actual bale weights depend on operator and material baled.*



CK500V complies with EN16500 – European Standards for vertical balers.